

FOR SALE or LEASE

**1198 S. Arlington Street
Akron, Ohio**

Approximately 4,160 sf available



Description: Freestanding building located on the SW corner of South Arlington and E. Wilbeth. The building sits at a light adjacent to Popeye's Chicken on .48 acres. Pylon sign at the corner.

Nearby Tenants: Save A Lot, Roses Express, Aldi's, CitiTrends, Goodwill, Family Dollar, Auto Zone, O'Reilly's, Dave's Supermarket, Circle K, Burger King, Walgreens, etc.

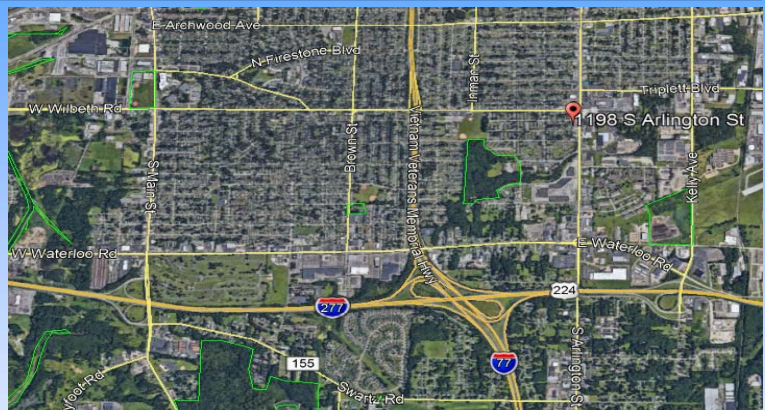
Demographics:

Population:

1 mile: 14,020
3 miles: 86,274
5 miles: 195,767

Median Household Income:

1 mile: \$27,907
3 miles: \$33,163
5 miles: \$36,953

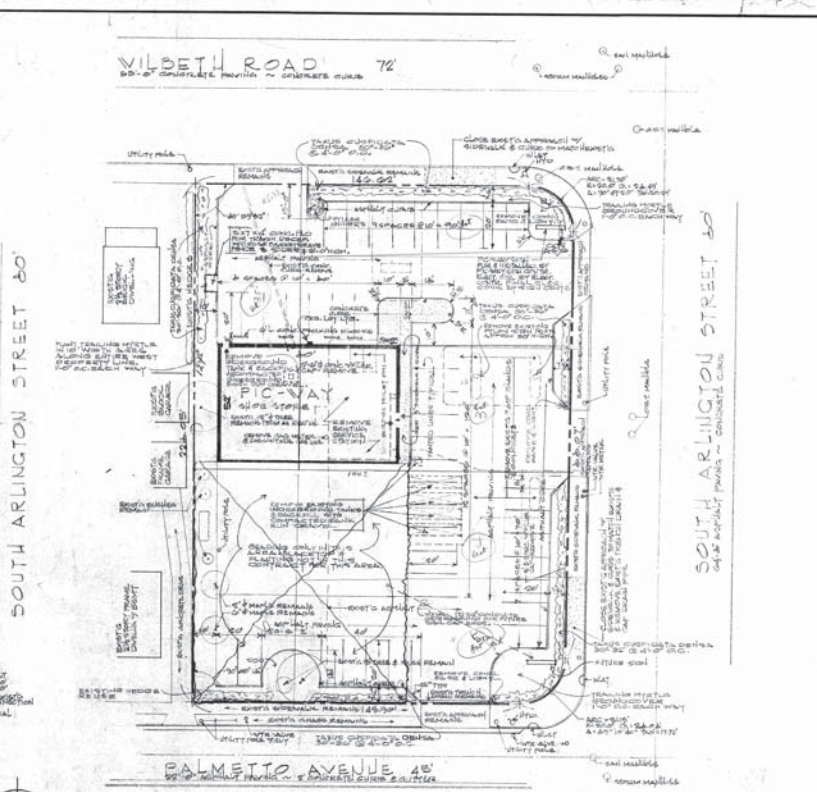
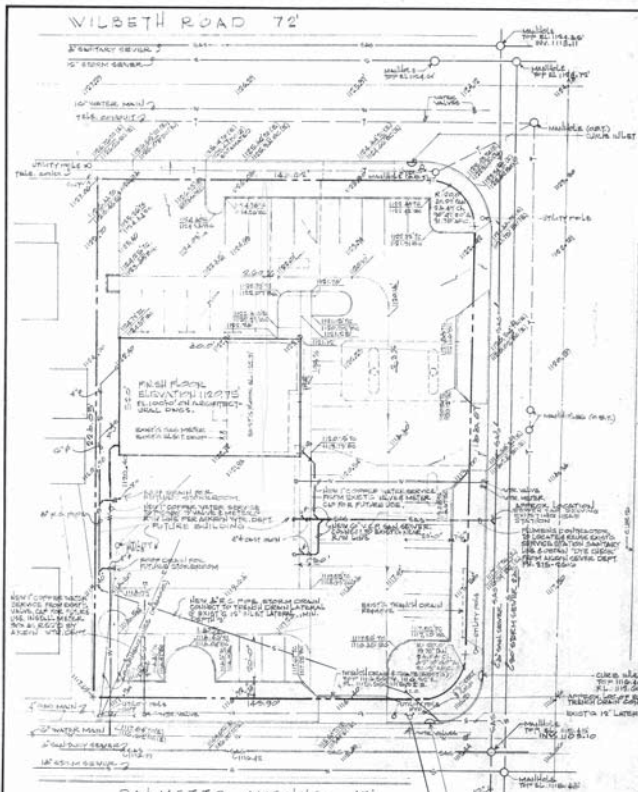


**For more information contact:
Craig Cohen
Craig@CohenCommercialGroup.com**



**Cohen Commercial Group
6151 Wilson Mills Road, Suite 100
Highland Hts, Ohio 44143
(216) 223-5060**

The information submitted herein is not guaranteed. Although obtained from reliable sources, it is subject to errors, omissions, prior sale/lease and withdrawal from the market without notice. Cohen Commercial Group, its affiliates, agents, and employees, and Seller/Landlord make no representations about the accuracy of said information and recommend individual investigation to certify its validity.



GRADING & UTILITY PLAN
SCALE 1" = 20'

SYMBOLS & ABBREVIATIONS

- 1/2" — GRADING ELEVATION
- 3/4" — EXISTING ELEVATION
- 1" — WATER LINE
- 1 1/2" — SEWER LINE
- 2" — STORM LINE
- 3" — GAS LINE
- 4" — ELECTRIC LINE
- 6" — TELEPHONE LINE
- 8" — CABLE TELEVISION LINE
- 10" — FIBER OPTIC LINE
- 12" — RAILROAD TRACK
- 14" — HIGHWAY
- 16" — AIRWAY
- 18" — CANAL
- 20" — DRAINAGE CANAL
- 22" — FLOOD CONTROL CANAL
- 24" — IRRIGATION CANAL
- 26" — OTHER CANAL

NOTE: REMOVE ALL EXISTING ASPHALT PAVING & DISPOSE OF OFF OF THE SITE.

SITE PLAN
SCALE 1" = 20'

BOUNDARY LINES & EXISTING GRADINGS FROM A SURVEY BY GEORGE L. BRIDGEMAN, S. & A. L. L. P. 20
 LAND SURVEYOR
 1010 N. W. 10TH AVE., SUITE 100
 MIAMI, FLORIDA 33136

ANY DEVIATION FROM THIS SET OF PLANS & SPECIFICATIONS SHALL BE APPROVED BY THE ARCHITECT OR THE OWNER BY WRITTEN CHANGE ORDER.

SHEET NO. 1

CURTIS N. LINDBERG
ARCHITECT
1850 WEST FIFTH AVENUE
COLUMBUS, OHIO

PIC-VAY SHOE MALL
SOUTH WEST CORNER OF
SOUTH ARLINGTON ST. & WILBETH RD.
COLUMBUS, OHIO

COMMISSION NO. 77-52

DATE: 11-1-75

REVISIONS:
1-1-75
C-N

STATE OF OHIO
COUNTY OF FRANKLIN

SHEET NO. 1